



A M B E **R** L I N E

WINDOWS FROM THE NORTH

# THE HIGHEST QUALITY FOR YOUR SATISFACTION

## PVC AND ALUMINUM

- › Windows
- › Doors
- › Balcony doors
- › Facades
- › Winter gardens

# WHY A M B E R L I N E ?

## BECAUSE

### » Your safety is our priority

E.g.

- › Burglar-proof handle, Additional detents, closed shape steel in every window
- › Innovating and award-winning solutions in safety

### » We care about your comfort

Functionality and advanced technology is being researched by our company

### » Your health is of highest importance to us

We were the first one to introduce energy-efficient PVC and aluminum windows with air-exchange around the sash

### » We stand up on timeless esthetics

Our long time experience and advanced technologies let us create unusual and original solutions

### » Focusing on details and solidity make us a valuable company for our clients

- › Only class A PVC profiles:
- › Components come from renowned suppliers
- › All products are certified by international institutions





# AMBERCLASSIC

## **AMBERCLASSIC 70**

Standard PVC window with classic design and good thermal parameter

## **AMBERCLASSIC 76**

Durable PVC window with excellent thermal parameters

## **AMBERCLASSIC 82**

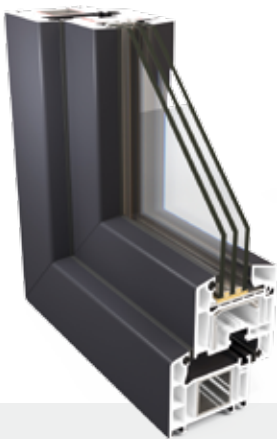
High-end PVC window for energy-efficient and passive construction



## CLASS A ONLY PROFILES FROM

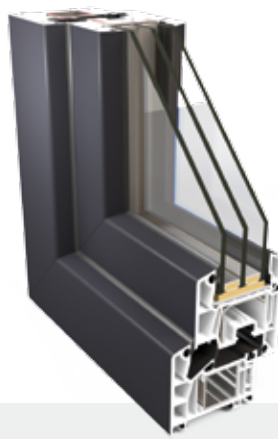


- › World-renowned brand
- › Certified profiles
- › Excellent statics
- › Profile's outer wall thickness equals 3 mm (This parameter meets the highest RAL standards in Class A)
- › Lifelong durability
- › Lifelong resistance to poor weather conditions (wind, rain, snow)
- › Easy to maintain
- › Elegant look for many years to come
- › Durable, closed shape steel in the whole window frame
- › Environmental friendly



### AMBERCLASSIC 70

- › Class A profiles
- › 5- chambers
- › 70 mm installation depth



### AMBERCLASSIC 76

- › Class A profiles
- › 6-chambers
- › 76 mm installation depth



### AMBERCLASSIC 82

- › Class A profiles
- › 7-chambers
- › 82 mm installation depth



# AMBERTERM



New generation of  
energy – efficiency.  
Heat locked inside  
the house

## AMBERCLASSIC 82 MD

Triple gasket window  
(Outer, middle, inner)  
for even better thermal  
and acoustic performance



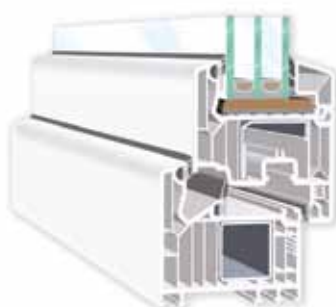
**PERFECT  
FOR PASSIVE  
CONSTRUCTION**

- › Phenomenal heat infiltration factor for a whole window:  $U_w \geq 0,7 \text{ W/m}^2\text{K}^*$
- › 82 mm installation depth which guarantees the highest level of energy-efficiency for passive and energy-saving housing
- › Triple and double glazed windows with window pane thickness from 24 mm to 52 mm
- › Introduces many possibilities for custom glazed sashes and frames
- › Profile's outer wall thickness equals 3 mm
- › Multi-chambered profile's geometry: 7-chambers in window's profile 6-chamber in sash's profile

\* for window panes  $U_g = 0,4 \text{ W/m}^2\text{K}$   
and  $\psi_g = 0,035 \text{ W/m}^2\text{K}$

HIGH THERMAL PARAMETERS  
RICH EQUIPMENT  
LARGE CONSTRUCTIONS

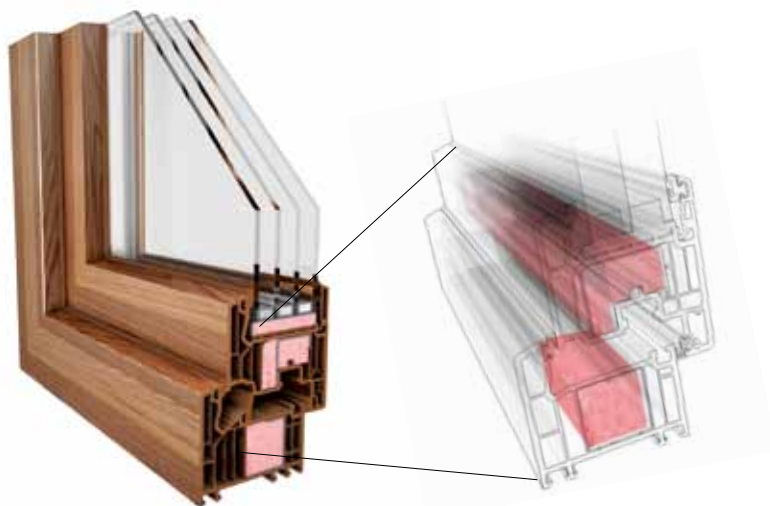
- › Triple gasket system with a middle gasket available in 3 color schemes, ensures thermal and acoustic insulation leaving the hardware chamber dry.





# AMBER **PASSIVE**

**PVC**



Energy-efficiency  
at a highest level

**PASSIVE WINDOW**

For our most  
demanding users



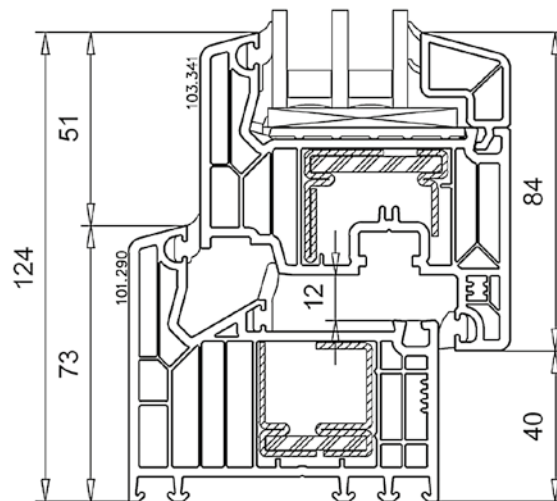


**PERFECT  
FOR PASSIVE  
CONSTRUCTION**

Based on energy-efficient profile Softile82 MD strengthened with our special thermal steel with triple gasket technology and thicker windowpane we created a window, which meets the requirements needed to build passive houses.

Deeper windowpane embedment gives excellent sealing features (from cold, humidity, wind) together with acoustic and thermal insulation.

Universal construction of this unit makes it compatible with window door, entrance and slide doors as well as with other accessories like: windowsills and blinds.





# AMBERSLIDE

PVC



Balcony window  
with zero  
threshold.

Large dimension and  
energy-saving  
lift and slide terrace  
windows (HST type).

Ideal for living rooms  
with panoramic views.



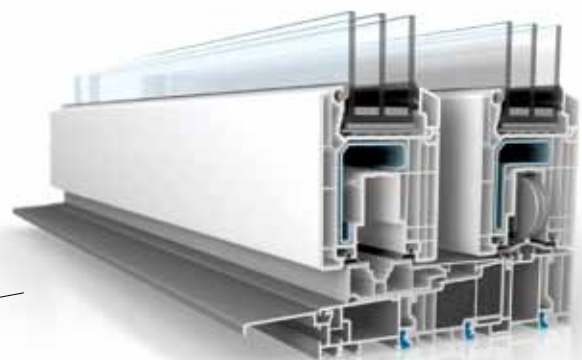
## NO BORDERS BETWEEN INTERIORS AND SURROUNDING

- › Amberclassic 82 profile- in class A
- › Unit dedicated for large glazed areas (even up to 6,5 m wide and 2,7 m high)
- › Outstanding insulating parameters
- › Innovating low-threshold design with excellent thermal insulation features, achieved by implementing duo thermal barrier and integrated insulating wedge
- › Comfortable passage because of low-threshold design (50 mm)
- › Easy to use
- › Wide range of construction solutions



Attachable drip cap creates a support for lowered shutter and eases future construction and renovating works on terrace or balcony.

Threshold's flat design and its integrated ending make the unit barrier free.



Newly designed door threshold has outstanding Thermal insulating features achieved by i.a. Implementing duo thermal compartment and Integrated insulating wedge



# AMBERSPACE



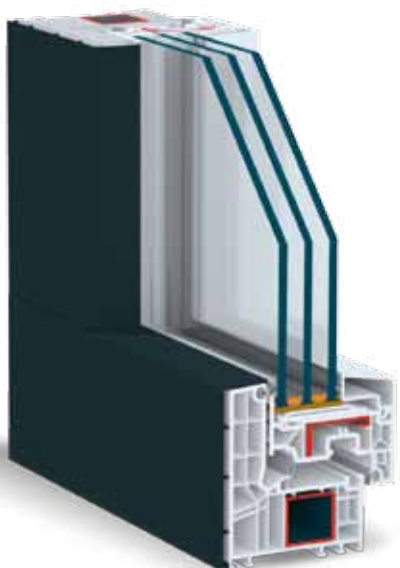
PVC window designed for those who value minimalism and purism in architecture

- › Class A thermal performance  
Amberclassic 82 in Artline option
- › Class A
- › 7-chamber window frame
- › 82 mm mounting depth



## MINIMAL CONSTRUCTION! MAXIMAL SPACE!

- › Puristic, sophisticated design
- › Exclusive look
- › Frameless glazing
- › Sash's frame hidden behind casing sash
- › Casing's frame hidden in building's insulation
- › Possibility of using large glazing
- › Possibility of implementing unusual shapes and designs, like arches
- › Option of use internal or external muntin
- › Class A energy-efficient profile



Wide range of color schemes thanks to aluminum veneer.





# AMBERFOLD



Fold and slide aluminum door, folds like a harmonica. Perfect solution recommended for large passages. Low-threshold and lack of built-in sashes makes it a barrier-free unit.



## FOLD AND SLIDE DOORS

HS – harmonica type doors are ideal for areas where large passages are required, it also creates an optic illusion of bigger space.

This type of unit is widely recommended residences with large terraces, loggias and swimming pools.

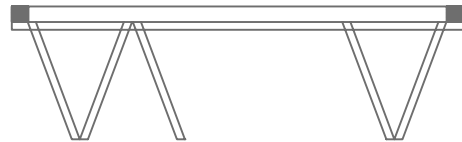
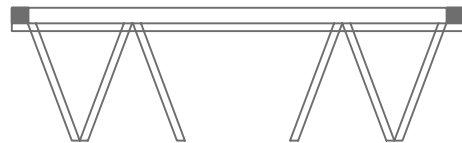
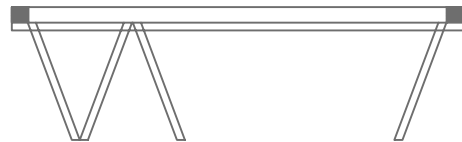
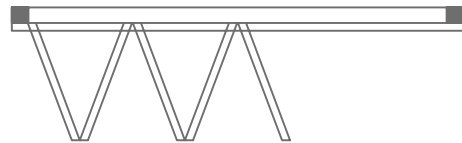
Clever connection of internal and external space created by folding all sashes on one or two sides in chosen configuration.



### ADVANTAGES

- › Lack of vertical mullions
- › And built-in sashes in open version
- › Possibility of low-threshold options
- › A large selection of opening and connecting
- › Configurations of the sashes

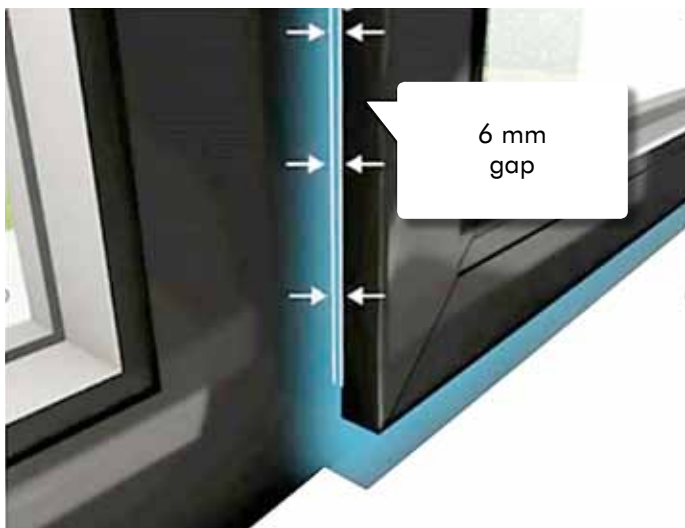
### Examples of openings:





# AMBERSAFE

PVC ALU



Window that is opened and closed at the same time.

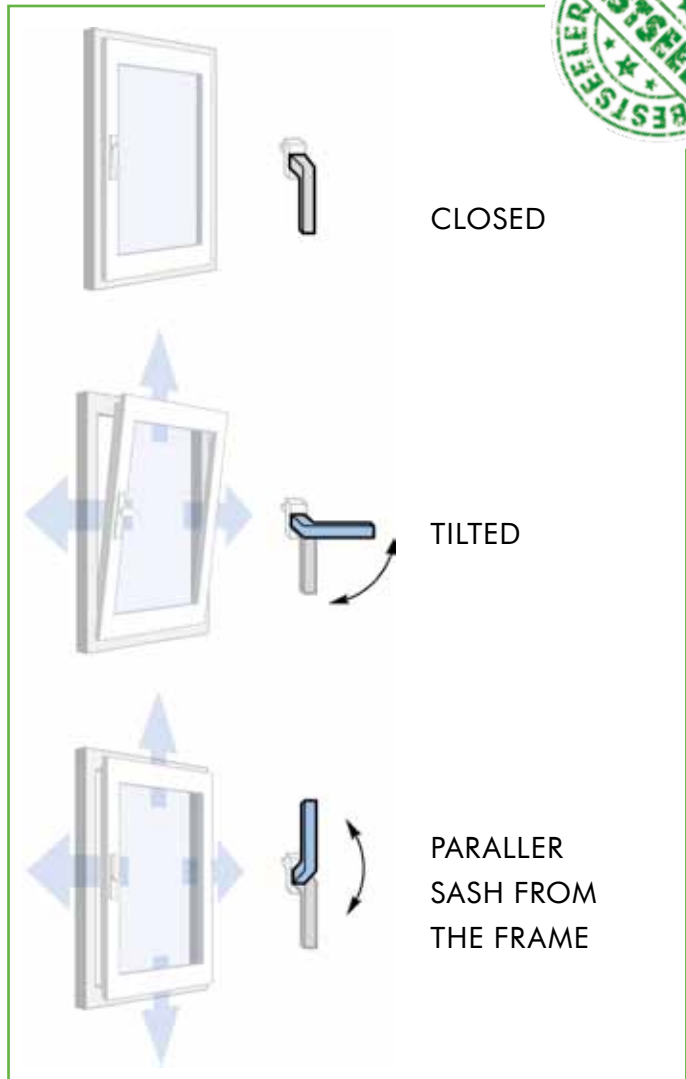
PVC window with innovating function of air exchange all around the sash, through.

Natural and energy-efficient ventilation recommended for areas with high humidity, like bathroom, bedroom and kitchen.





## WINDOW OPERATION SCHEME



## ADVANTAGES



**HEALTH.** Natural air exchange, regardless of the weather conditions.



**SAFETY.** Anti-burglar system, while window is in ventilation position.



**SAVINGS.** No necessary energy loss



**COMFORT.** No drafts



**CONVENIENCE.** Fresh air at home in any weather, even during rain and snow.



**ANTI MOSQUITO.** Small air gap ( 6 mm) prevents insects from getting into the house. It's a great alternative for a window screen.



**MISLEADS THE THIEF.** When window is in parallel action, it is impossible to that handle is in open position





# AMBERSMART

## STAY IN TOUCH WITH THE HOUSE

Advanced technological solutions and multifunctional window, which can be monitored and controlled from any place in the world through any mobile device with Internet connection.





## INTELLIGENT WINDOW

Range of control and programming functions:

- › Closing and opening of windows/ balcony doors/ blinds
- › Protection from unauthorized intrusion, in connection with at home sensor
- › Creating function for automation of selected functions e.g. closing the window in case of rain or snowfall
- › Luxury option, window pane transparency control

## REMOTE CONTROL

Wireless radio hook,  
battery-powered



Self-sustaining radio hook, due  
to integrated solar cells





# AMBERELEGANCE



## SPECTRAL

Noble and ultra mat profile's structure is ideal for connoisseurs of aesthetics

## SELECT

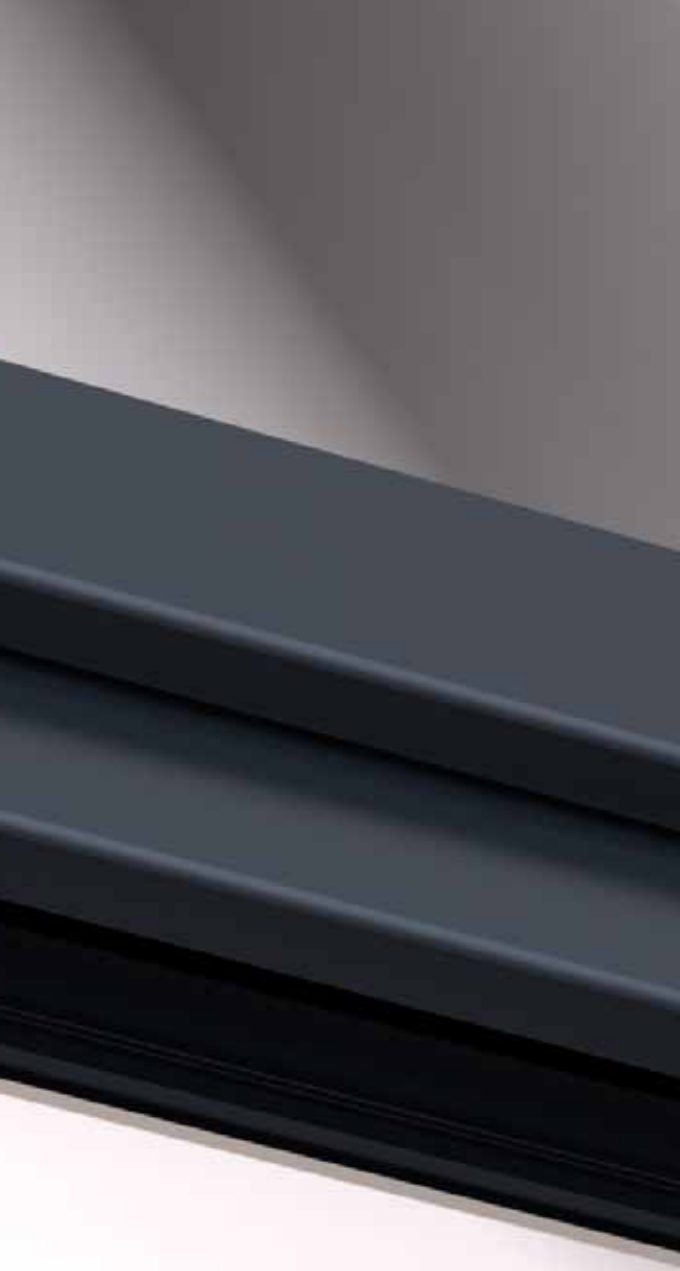
Hidden, invisible hardware

## COLOR INSIDE

Inner part color same as profile's color

## HALF FLASHED PROFILE

Gently rounded shapes  
More light in a room



## TIMELESS ELEGANCE

### SELECT

System of a hidden hardware is an ideal solution for sophisticated architecture admirers and individualists.

Hingeless effect-was created by hiding the hinges in the small space between a sash and a frame.

### HALF FLASHED PROFILE

Lowers the height of a whole unit, which helps which allows more light to enter the room and gives it a unique, rounded shape design.

### COLORFUL INSIDE

In selected color options the core of the profile can be colored, due to this the whole profile can have the same color on the outside as well as on the inside.

In addition, window is protected from freezing due to placing the hardware in a dry chamber.

### SPECTRAL

Is available in wide range of colors: dark grey(anthracite) ultra mat, platinum gray ultra mat, umbra ultra mat, graphite black ultra mat and white also in ultra mat.

Spectral is available on Softline 82 and Softline 76 system single or double coated.





# AMBERGLASS



**OPEN UP TO  
A BIGGER SPACE**

Exclusive, all-glass constructions with an exquisite and elegant hardware.



**dormakaba** 

**UNIQUE EFFECT OF CLEAR  
CONSTRUCTION WITHOUT  
VISIBLE MOUNTING**

Frameless units based on special  
glazing and hardware.



Sophisticated hardware design

Safe and functional all-  
glass swing door with  
innovating solution- axis of  
rotation placed as close as  
possible to door's edge.

Risk of finger trapping  
reduced to minimum.

**CHILDREN FRIENDLY  
DOORS**





# AMBERVIEW



## VIEW WITHOUT LIMITS

Aluminum slide terrace doors  
created for minimalism  
and open space admirers





## ARCHITECTURE OPEN TO NATURE



- › Minimalistic design
- › Reduced width of a frame
- › Noble look
- › Large glazing
- › Possibility of automatic control
- › Option of using high-quality transparent glass with upgraded optics
- › Option of applying special sun blocking glass





# AMBER**FIRE**



Fireproof aluminum windows and doors with fire resistance in class:

- › E15\*
- › EI30
- › EI60
- › EI120

\* E = fire integrity  
I = thermal insulation  
in minutes



- › Indoor and outdoor fixed dividers and doors in EI 15 and EI30 class
- › Sliding doors in EI30 class
- › Walls without muntins in EI30 and EI60 class
- › Post and beam facade systems in EI15 and EI60 class
- › Inner compartments with fire resistance in EI120 class
- › Glazed roofs in REI20/RE30

All of the products are compatible with each other

**NOVELTY**

All-glass partition walls in EI30 and EI60 class



Translucent, fire resistant, frameless partition walls- characterized by high translucency





# AMBERGARDENS



## IN HARMONY WITH NATURE

Winter gardens based on specially designed aluminum profile and suitable glazing dedicated to enthusiasts of summer and its microclimate.



## WINTER GARDEN

- › Ensures maintaining a proper temperature and healthy air-circulation all year round
- › Can be used as living area, office space, all year garden or house porch for relaxation
- › Guarantees pleasant insolation on colder and cloudy days, thermal insulation and ventilation, despite of the weather conditions

### BE INSIDE AND OUTSIDE AT THE SAME TIME

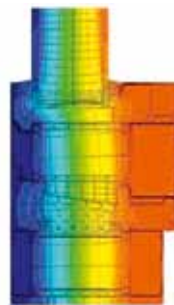
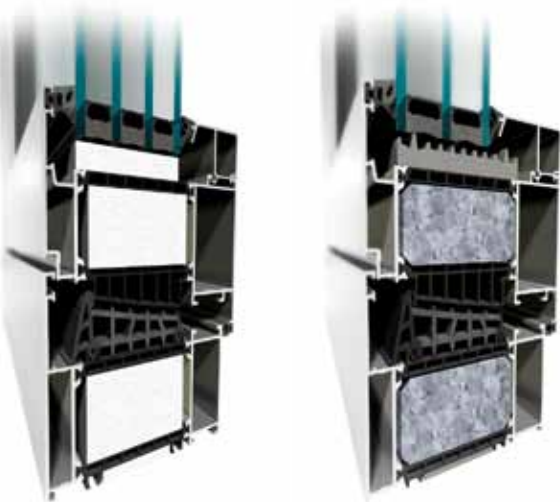
The effect of connecting the inside of the house with the outside ,is created by installing terrace doors in winter garden's construction.





# AMBER **PASSIVE**

ALU



Modern, passive aluminum window used in buildings with high thermal and insulation demands



New aluminium **Ferroline** window imitates steel joinery and is perfectly suitable for renovation of historic buildings.



## MOST POPULAR ALUMINUM SYSTEMS



**86**  
with outstanding  
insulation properties



**70**  
with an excellent  
thermal and  
acoustic insulation



**NOVELTY**

**Ferroline**  
with small profile's  
width and thermal  
interleaf



**Slimline**  
with very narrow profile  
and thermal interleaf



# AMBERSLIDE

ALU



Aluminum, lift and slide doors, providing panoramic view and convenient passage between the room and the surroundings



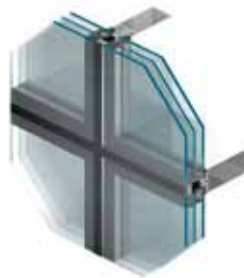


## MOST POPULAR FACADE SYSTEMS



### SR50N

Post and beam façade



### SR50 Effect

Semi-structural façade



### SR50 A

overlay version

## HST





## CLASSIC ENTRANCE DOORS

**PVC** **adeco** 



CAMARA



BELIDO



DELMARO



ELONI



## MODERN ENTRANCE DOORS



BRUXELLES



TALIO



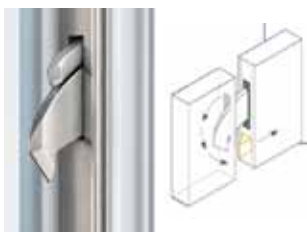
METRIS



PENDA



## DOOR LOCKS AND ACCESS CONTROL SYSTEMS



Multipoint locks with automatic locking  
AV3



New wireless access control system

blueCompact



Wireless power supply  
Frame-door wing



blueSmart



blueTooth

# ZAWSZE W STANDARDZIE KAŻDEGO OKNA



**NOVELTY**

◀ SecuForte® a completely new standard of burglary resistance. Handle with built-in safety system, without possibility of breaking in from the outside

**ALWAYS INCLUDED IN PRICE**



▲ Handle blocking function when handle is in wrong position



▲ Two bolting hooks in every sash RU and PVC



▲ Warm, distance frame for better window's thermal insulation



▲ Octagonal, so called blocking mushroom. Tighter window press. Greater protection against smashing the window down



▲ Teflon sleeve on upper and lower sliding bearing hinge for noise and wearing down reduction



▲ 3 point locking system in every door



◀ System steel with screws in windows' profiles for better static and anticorrosive properties. Each profile has screwed in thick, system steel completely closed in the frame

Carrying handles ►



# ift-KONFORMITÄTSZERTIFIKAT

## ift-CERTIFICATE OF CONFORMITY



### Fenster / Windows

<b>System</b> <i>System</i>	VEKA	
<b>Typbezeichnung</b> <i>modelname</i>	Softline und Perfectline	
<b>Produktfamilie</b> <i>Product family</i>	1. Dreh-; Drehkippenfenster + Fenstertüren, Festverglasungen 2. Stulpfenster + Stulpfenstertüren, sowie Kombinationen aus 1. und 2.	
<b>Rahmenmaterial</b> <i>Frame material</i>	Kunststoff / PVC	AMBERLINE
<b>Hersteller</b> <i>Manufacturer</i>	AMBERLINE Sp. z.o.o ul. Krzyszofa Kolumba 20, PL 78-100 Kolobrzeg	
<b>Produktionsstandort</b> <i>Production site</i>	AMBERLINE Sp. z.o.o ul. Krzyszofa Kolumba 20, PL 78-100 Kolobrzeg	

Mit diesem Zertifikat wird bescheinigt, dass die benannten Fenster den Anforderungen des ift-Zertifizierungsprogramms für Fenster und Außentüren (QM 320 : 2013) entsprechen.

Grundlagen sind durch das Prüflabor erstellte Produktfamilien der aufgeführten Fenster, Prüfung durch das Prüflabor nach EN 14351-1 : 2006 + A1 : 2010, eine werkseigene Produktionskontrolle des Herstellers, eine Fremdüberwachung der Fertigung durch die Überwachungsstelle in den benannten Standorten und eine jährliche Stichprobenprüfung von im Werk entnommenen Proben.

Die Gültigkeitsdauer des Zertifikates beträgt 3 Jahre. Mit der Erteilung des Zertifikates ist eine regelmäßige Fremdüberwachung des Herstellers verbunden.

Das Zertifikat darf nur unverändert vervielfältigt werden. Alle Änderungen der Voraussetzungen für die Zertifizierung sind dem ift-Q-Zert mit den erforderlichen Nachweisen unverzüglich schriftlich anzudeuten.

Das Unternehmen ist berechtigt, die Beschläge gemäß der ift-Zeichensatzung mit dem „ift-zertifiziert“-Zeichen zu kennzeichnen.

Diese Bescheinigung ersetzt nicht die Erstellung der EG-Konformitätserklärung durch den Hersteller.

The present certificate attests that the windows mentioned fulfils the requirements of the ift-certification scheme for windows and external pedestrian doorsets (QM 320 : 2013).

Basis of the certificate are the product families of the windows listed that have been compiled by the test laboratory, tests performed by the test laboratory as per EN 14351-1 : 2006 + A1 : 2010, factory production control by the manufacturer, a third-party surveillance audits of the production by the surveillance bodies at the sites mentioned and an annual audit-testing of samples which were taken at the factory.

The certificate is valid for a period of 3 years. Award of the certificate is subject to regular third-party surveillance of the manufacturer.

The reproduction of the certificate without any change whatsoever from the original, is permitted. Any changes to the prerequisites applicable to certification shall be immediately communicated in writing to ift-Q-Zert accompanied by the necessary evidence.

The company is authorised to affix the "ift-certified"-mark to the hardware according to the ift rules for use of the "ift-certified"-mark.

This certificate does neither replace the EC-declaration of conformity drawn up by the manufacturer.



*Christian Kehrer*

Christian Kehrer  
Leiter ift Zertifizierungs- und Überwachungsstelle  
Head of ift Certification and Surveillance Body

*Ulrich Sieverath*

Ulrich Sieverath  
Institutsleiter  
Director of Institute

Rosenheim  
10. April 2016

Vertrag-Nr. / Contract No.: 181 6047821

Zertifikat-Nr. / Certificate No.: 181 6047821-1-4

FIND OUT MORE  
ON OUR WEBSITE





Amberline sp. z o.o.  
Poland  
78-100 Kołobrzeg  
ul. K. Kolumba 20  
Tel.: +48 94 35 51 820  
info@amberline.eu  
www.amberline.eu

